

# STYLE 64000

Softstyle Adult T-Shirt

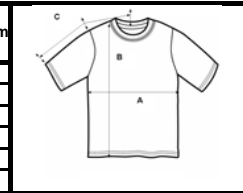
DETAILS	
<b>Weight</b>	150 g/m2 (141 g/m2 in White)
<b>Content</b>	100% cotton preshrunk jersey knit (see colours for exceptions)
<b>Features</b>	Deluxe 30's Soft style yarns NOTE: Heathers 35% cotton / 65% polyester Seamless twin needle 3/4" collar Taped neck and shoulders Rolled forward shoulders for better fit Twin needle sleeve and bottom hems Quarter-turned to eliminate centre crease
<b>Sizes</b>	S - 2XL
<b>Case Packs</b>	S - 2XL 72 pieces
<b>Colors</b>	30
<b>SKU's</b>	150

NOTES

**N.B.:**  
 \* All weights indicated relate to colours only.  
 White being +/-6% lighter.  
 \* Cotton / Polyester

SPECIFICATIONS

Size	Chest/inches (A)	Chest/cm	Length/inches (B)	Length/cm	CB Sleeve/inches (C)	CB Sleeve/cm
Small	18	45.72	27	68.58	15.75	40.01
Medium	20	50.8	28	71.12	17	43.18
Large	22	55.88	29	73.66	18.25	46.36
X-Large	24	60.96	30	76.2	19.5	49.53
2X-Large	26	66.04	31	78.74	20.75	52.71
Tol.	+/-1	+/- 2.54	+/-1	+/- 2.54	+/- 0.75	+/- 1.91



COLOURS

S - 2XL			
Antique Cherry Red (90/10)*	246C	Heather Purple (35/65)*	232C
Antique Heliconia (90/10)*	247C	Heather Royal (35/65)*	218C
Black	036C	Indigo Blue	080C
Cardinal Red	011C	Irish Green	167C
Charcoal	042C	Kiwi	186C
Cherry Red	194C	Light Blue	069C
Chestnut	084C	Military Green	106C
Daisy	098C	Navy	032C
Dark Chocolate	105C	Orange	037C
Dark Heather (35/65)*	108C	Purple	081C
Forest Green	033C	Red	040C
Heather Irish Green (35/65)*	215C	Royal	051C
Heather Military Green (35/65)*	231C	Sand	038C
Heather Navy (35/65)*	170C	RS Sport Grey (90/10)*	295H
Heather Orange (35/65)*	259C	White	030N

Changes for September 2012		
S - 2XL	Additions	Antique Cherry Red, Antique Heliconia, Heather Irish Green & Heather Military Green
<b>Net Plus 20 SKU's</b>		
S - 2XL	Deletions	Heather Maroon, Honey, Paprika & Yellow Haze
<b>Net Minus 20 SKU's</b>		
<b>Total Net Change 0 SKU's</b>		